

NEOMETRIX

An ISO 9001 2008 Company

MICROPROCESSOR CONTROLLED DV TEST BENCH MODEL: A4557 MAKE: NEOMETRIX

The information contained herein is confidential and proprietary to Neometrix Engineering (P) Ltd and the same can not be reproduced or disclosed in whole or in part. The information is not to be used for the design or manufacture of any related equipment or processes without written approval from Neometrix Engineering (P) Ltd.

Page 1 of 11

Document Name: DV TEST
BENCH

04th SEP,2023

Neometrix Engineering (P) Limited. E-148,Sec-63 Noida-201301.

Tel: +91-120-4500800, Fax: +91-120-4500888, contact@neometrix.in

NEOMETRIX

An ISO 9001 2008 Company

1. Introduction of the System:

The system is designed to test the performance of the Distributor valve. Distributor Valve works on Pressure difference in the Brake Pipe. The system is consisting Brake Pipe, Auxiliary Reservoir, Brake Cylinder and Control Reservoir.

The system consist Data Acquisition systems including IPC, Printer and UPS for power back up.



FRONT VIEW OF DV TEST BENCH WITH DAQ PANEL

The information contained herein is confidential and proprietary to Neometrix Engineering (P) Ltd and the same can not be reproduced or disclosed in whole or in part. The information is not to be used for the design or manufacture of any related equipment or processes without written approval from Neometrix Engineering (P) Ltd.

Page 2 of 11

Document Name: DV TEST
BENCH

04th SEP,2023

Neometrix Engineering (P) Limited. E-148,Sec-63 Noida-201301.

Tel: +91-120-4500800, Fax: +91-120-4500888, contact@neometrix.in

NEOMETRIX

An ISO 9001 2008 Company

The DV Test Rig Test the following Parameters one by one :

1. Charging Time of AR & CR
2. Leakage Test
3. Brake Application Time
 - i) In Full Service Application
 - ii) In Emergency Application
4. Brake Releasing Time
 - i) In Full Service Application
 - ii) In Emergency Application
5. Max. Brake Cylinder Pressure
 - i) In Full Service Application
 - ii) In Emergency Application
6. Sensitivity
7. Insensitivity
8. Graduated Application
9. Graduated Release
10. Re-feeding Test
11. Availability of BP pressure
12. Overcharge Protection Test
13. Quick Release Valve Test

The information contained herein is confidential and proprietary to Neometrix Engineering (P) Ltd and the same can not be reproduced or disclosed in whole or in part. The information is not to be used for the design or manufacture of any related equipment or processes without written approval from Neometrix Engineering (P) Ltd.

Page 3 of 11

Document Name: DV TEST
BENCH

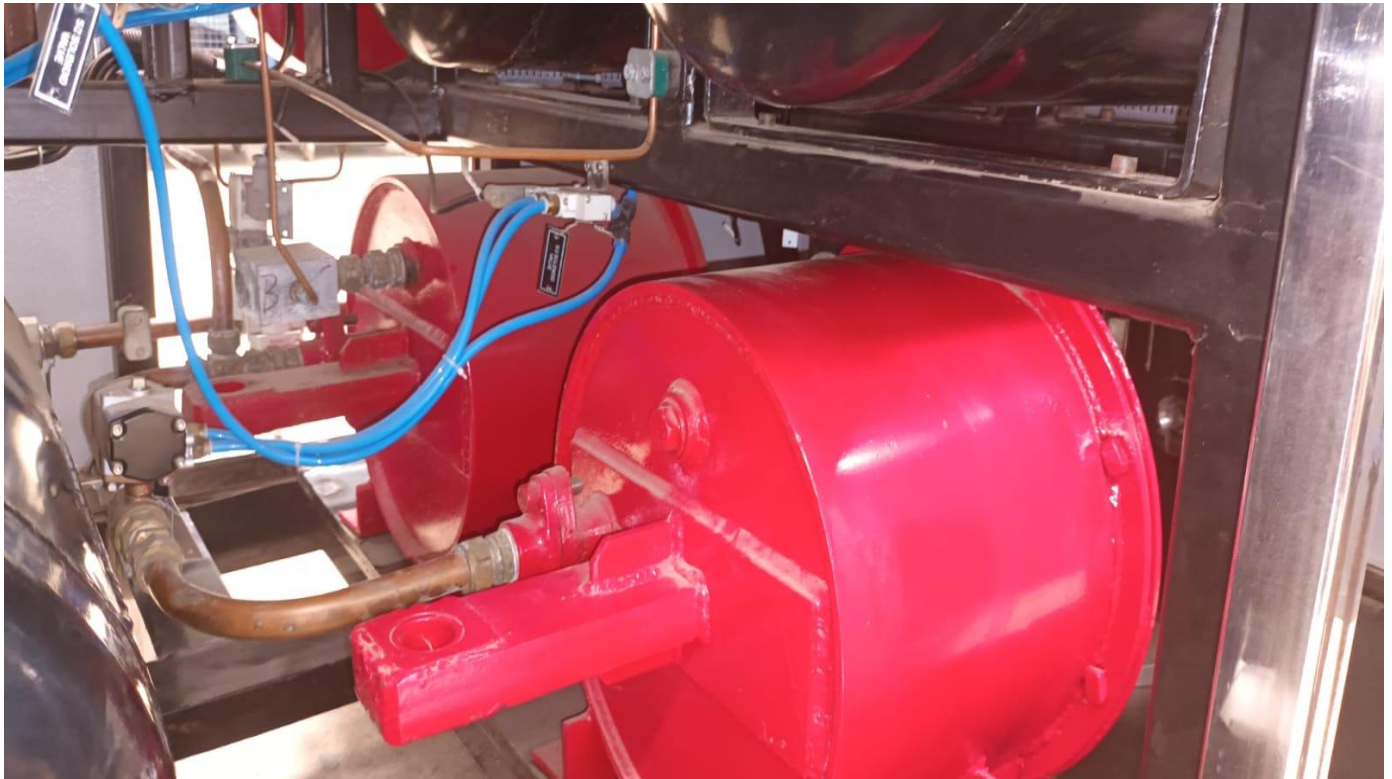
04th SEP,2023

Neometrix Engineering (P) Limited. E-148, Sec-63 Noida-201301.

Tel: +91-120-4500800, Fax: +91-120-4500888, contact@neometrix.in

NEOMETRIX

An ISO 9001 2008 Company



RDSO APPROVED BRAKE CYLINDER INSTALLED IN SIDE TEST BENCH

The System can be used to test the Distributor Valve for Coach and Wagon (Loaded or Empty)

The stroke Length of the Brake Cylinder can be adjustable manually from machine according to the diameter of Brake Cylinder.

The system works on a predefined Test Sequence with an option to test the particular test.

The information contained herein is confidential and proprietary to Neometrix Engineering (P) Ltd and the same can not be reproduced or disclosed in whole or in part. The information is not to be used for the design or manufacture of any related equipment or processes without written approval from Neometrix Engineering (P) Ltd.

Page 4 of 11

Document Name: DV TEST
BENCH

04th SEP,2023

Neometrix Engineering (P) Limited. E-148,Sec-63 Noida-201301.

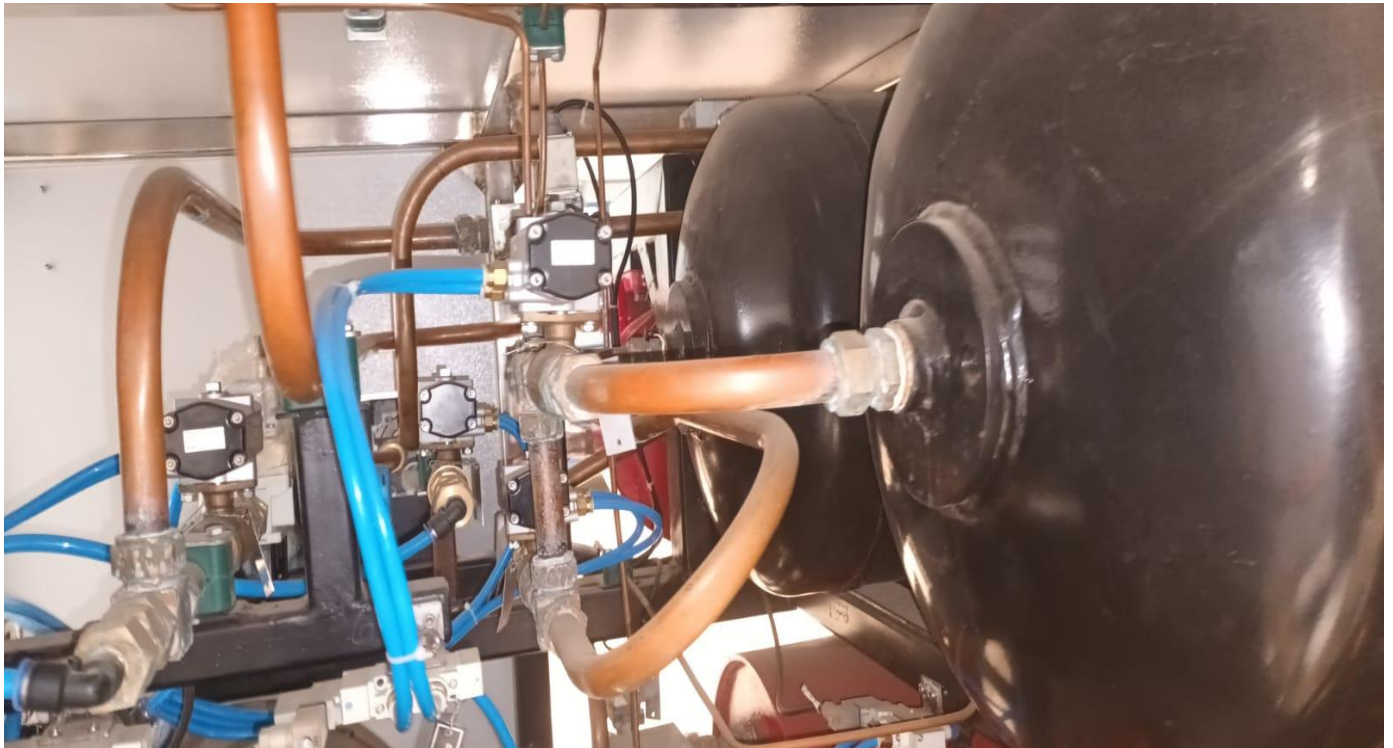
Tel: +91-120-4500800, Fax: +91-120-4500888, contact@neometrix.in

NEOMETRIX

An ISO 9001 2008 Company

2. System Specifications

Medium	=	Air
Pressure Rating	=	10 Kg/cm ²
Air supply Pressure Range	=	8-10 Kg/cm ²
Flow Rate	=	2400 LPM
Temperature Range	=	Ambient



RDSO APPROVED AIR RESERVOIR INSTALLED INSIDE TEST BENCH

The information contained herein is confidential and proprietary to Neometrix Engineering (P) Ltd and the same can not be reproduced or disclosed in whole or in part. The information is not to be used for the design or manufacture of any related equipment or processes without written approval from Neometrix Engineering (P) Ltd.

Page 5 of 11

Document Name: DV TEST
BENCH

04th SEP,2023

Neometrix Engineering (P) Limited. E-148,Sec-63 Noida-201301.

Tel: +91-120-4500800, Fax: +91-120-4500888, contact@neometrix.in

NEOMETRIX

An ISO 9001 2008 Company

3. Working Of The System:

The System is consisting dual working mode i.e. Automatic and A9 operated mode.

In Automatic mode the Test will be perform according to the predefined sequence automatically and also with an option for a particular test according to the requirement.

In manual mode the test will be done with A9 (Drivers Brake) and Toggles Switch.



KE TYPE DV TESTING AUTOMATIC

The information contained herein is confidential and proprietary to Neometrix Engineering (P) Ltd and the same can not be reproduced or disclosed in whole or in part. The information is not to be used for the design or manufacture of any related equipment or processes without written approval from Neometrix Engineering (P) Ltd.

Page 6 of 11

Document Name: DV TEST
BENCH

04th SEP,2023

Neometrix Engineering (P) Limited. E-148,Sec-63 Noida-201301.

Tel: +91-120-4500800, Fax: +91-120-4500888, contact@neometrix.in

NEOMETRIX

An ISO 9001 2008 Company

Mode Selection- The mode selection can be done with the Mode Selector with an option-

1- Automatic Mode.

2- A9 Operating Mode.



Figure 1: NEOMETRIX DV TEST BENCH A4557

The information contained herein is confidential and proprietary to Neometrix Engineering (P) Ltd and the same can not be reproduced or disclosed in whole or in part. The information is not to be used for the design or manufacture of any related equipment or processes without written approval from Neometrix Engineering (P) Ltd.

Page 7 of 11

Document Name: DV TEST
BENCH

04th SEP,2023

Neometrix Engineering (P) Limited. E-148,Sec-63 Noida-201301.

Tel: +91-120-4500800, Fax: +91-120-4500888, contact@neometrix.in

NEOMETRIX

An ISO 9001 2008 Company



Figure 2: DAQ PANEL FOR DV TEST BENCH

The information contained herein is confidential and proprietary to Neometrix Engineering (P) Ltd and the same can not be reproduced or disclosed in whole or in part. The information is not to be used for the design or manufacture of any related equipment or processes without written approval from Neometrix Engineering (P) Ltd.

Page 8 of 11

Document Name: DV TEST
BENCH

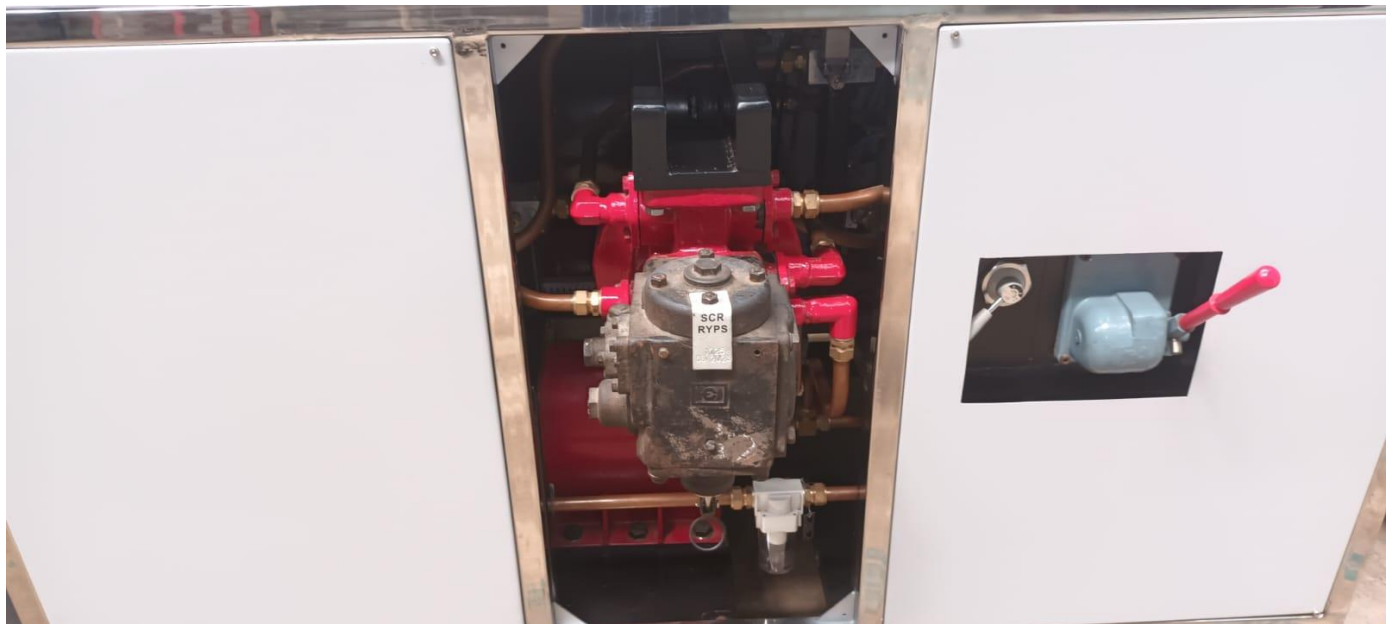
04th SEP,2023

Neometrix Engineering (P) Limited. E-148,Sec-63 Noida-201301.

Tel: +91-120-4500800, Fax: +91-120-4500888, contact@neometrix.in

NEOMETRIX

An ISO 9001 2008 Company



The information contained herein is confidential and proprietary to Neometrix Engineering (P) Ltd and the same can not be reproduced or disclosed in whole or in part. The information is not to be used for the design or manufacture of any related equipment or processes without written approval from Neometrix Engineering (P) Ltd.

Page 9 of 11

Document Name: DV TEST
BENCH

04th SEP,2023

Neometrix Engineering (P) Limited. E-148,Sec-63 Noida-201301.

Tel: +91-120-4500800, Fax: +91-120-4500888, contact@neometrix.in

NEOMETRIX

An ISO 9001 2008 Company

MICRO PROCESSOR CONTROLLED DV TEST BENCH ACCESSORIES –

1. DV Overhauling Table –



The information contained herein is confidential and proprietary to Neometrix Engineering (P) Ltd and the same can not be reproduced or disclosed in whole or in part. The information is not to be used for the design or manufacture of any related equipment or processes without written approval from Neometrix Engineering (P) Ltd.

Page 10 of 11

Document Name: DV TEST
BENCH

04th SEP,2023

Neometrix Engineering (P) Limited. E-148,Sec-63 Noida-201301.

Tel: +91-120-4500800, Fax: +91-120-4500888, contact@neometrix.in

NEOMETRIX

An ISO 9001 2008 Company

2. DV Mounting and dismantling adjustable Trolley



The information contained herein is confidential and proprietary to Neometrix Engineering (P) Ltd and the same can not be reproduced or disclosed in whole or in part. The information is not to be used for the design or manufacture of any related equipment or processes without written approval from Neometrix Engineering (P) Ltd.

Page 11 of 11

Document Name: DV TEST
BENCH

04th SEP,2023

Neometrix Engineering (P) Limited. E-148,Sec-63 Noida-201301.

Tel: +91-120-4500800, Fax: +91-120-4500888, contact@neometrix.in