

Dual Hydraulic Test System

About-

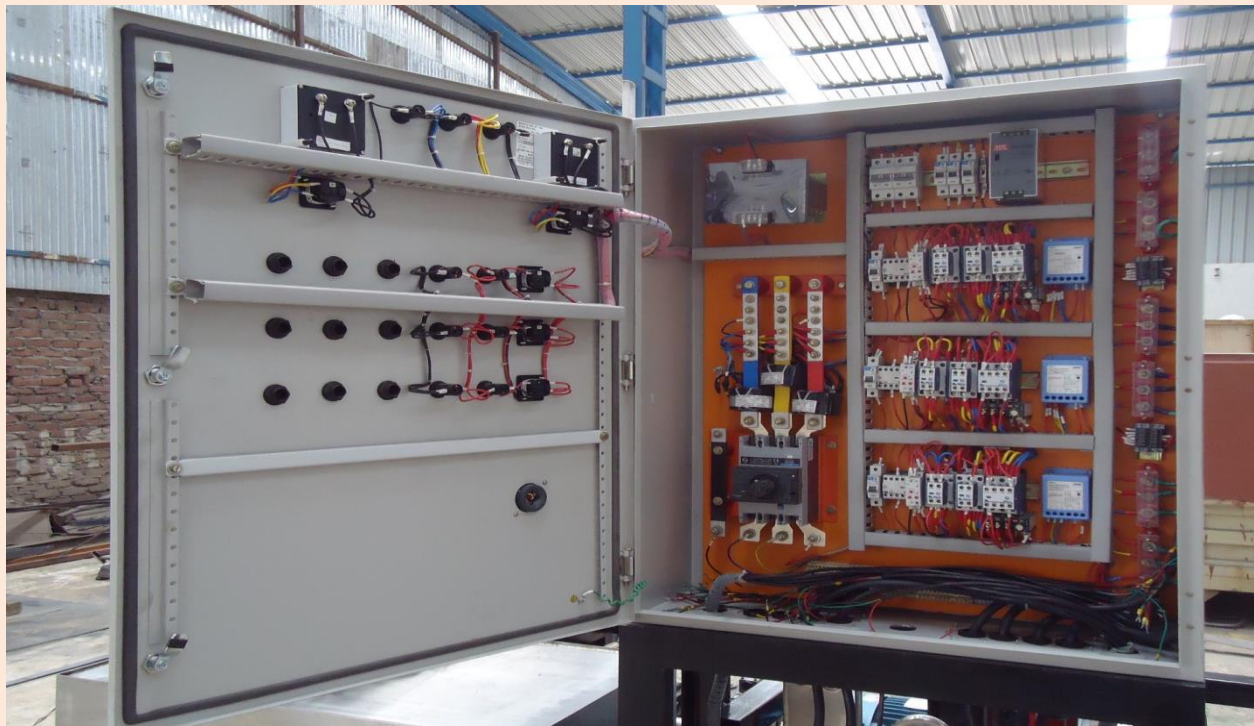
The SS Drip Tray is provided to keep the Test Component. Electrical Power Points are provided for actuating Test Component Solenoids. Both Digital Measurements as well as Manual measurements are provided. Three ROTAMETERS can be seen on the PANEL. The Hydraulic Power Pack is kept behind the USER PANEL; it may be kept behind a wall to reduce the Noise Level.

Application – Control (USER) Panel of Component Test Rig for Flow/Cycling/ Pressure Test/ Flushing Application.



Technical Specification-

ITEM	SPECIFICATION
Measuring Jar	Capacity:- 0-3 liter, Resolution:-25 ml
Dial Indicator	(+-) 0.5 mm to (+-)100 mm L.C.- 1 micron
Stop Watch	0-10 minute, L.C.= 1 millisecond
Megger/ Insulation Testor	Insulation tester for measurement at 510 VDC for 1 minute. Range up to 999 M ohm. Display analog or 3 digital battery or generator operated.
Dielectric Strength Tester	Dielectric strength tester for measurement at 500 VDC for 30 Sec.Measuring Range- 999 micro Ampere
multimeter	Digital Multimeter 4 Digit, resistance range 99 ohm, resolution 99.99 ohms
Linear Scale/ Vernier	Range:- 0-150 mm, Least Count- 5 micron
torque Wrench	Torque upto- 30Kgf-cm with socket for M16 hexagonal nut



Application-

Electrical Power Points are provided for actuating Test Component Solenoids. Both Digital Measurements as well as Manual measurements are provided. Three ROTAMETERS can be seen on the PANEL. The Hydraulic Power Pack is kept behind the USER PANEL; it may be kept behind a wall to reduce the Noise Level.



Key Features-

- Oxygen booster can Boost pressure up to 5000 PSI (345 Bars). The minimum inlet pressure (reject pressure) in inlet cylinders is 35 (+/-2) Bars.
- The inlet section comprises of 5 micron High pressure filter to insure the inlet Gas purity.
- One Stand By Oxygen Booster provided. Only one to be operated at a time.

