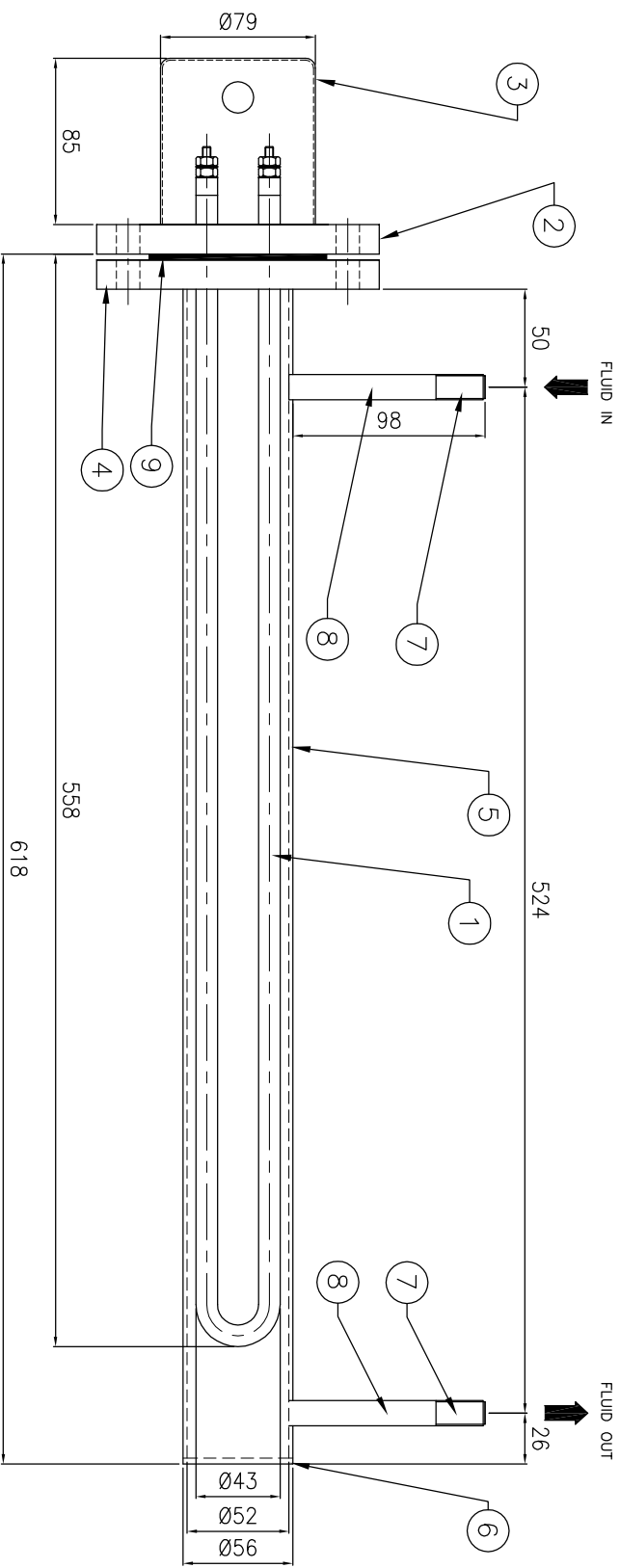
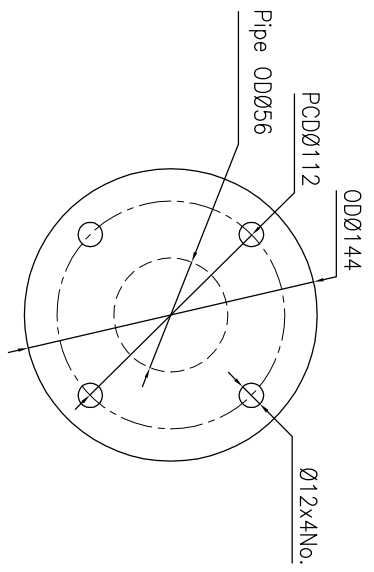


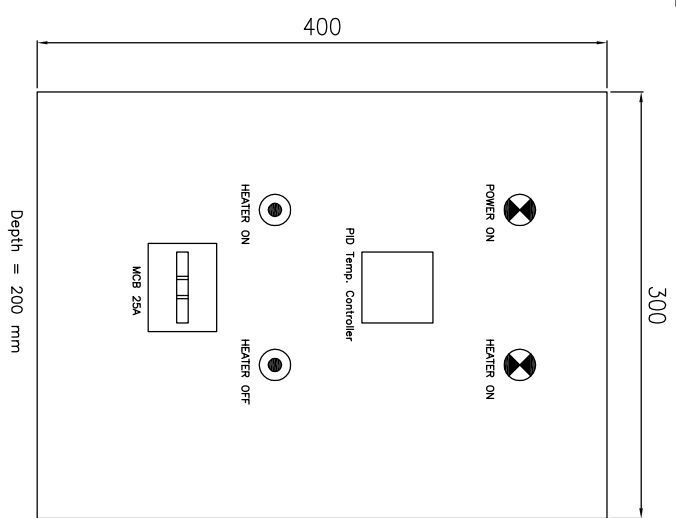
HEATER ASSEMBLY



FLANGE DIMENSIONS



CONTROL PANEL



Notes

1. Vessel volume ~ 1.5 Litres
2. Panel cable entries will be from bottom
3. TRTD will be supplied loose for installation downstream of heater
4. Design Pressure: 4 kg/cm²

11	Cable Entries	ø19.0 x 01 No.
10	Accessories	Control Panel
9	Watt Density	2.9 W / cm ²
8	Hot Length	500 mm
7	Insulative Length	40 mm
6	Immersed Length	540 mm
5	Heating Element Dia.	ø11.0 mm
4	Heating Element Sheath	S.S.304
3	Capacity of each element	1000 W / 230 V
2	No. of Heating Elements	02 Nos.
1	Heater Rating	2.0 kW/230V/1ø/2 wire

HEATER DATA

9	Gasket	To Suit	CAF	1	
8	Pipe	1/4" BSP X 75 Lg.	SS304	2	
7	Socket	1/4" BSP	SS304	2	
6	End Cap	OD064 X 3 Thk.	SS304	1	
5	Pipe	OD066 X 2 Thk. x 615 Lg.	SS304	1	
4	Pipe Flange	As per detail, 15 Thk.	SS304	1	
3	Terminal Cover	As per detail, 15 Thk.	M.S.	1	
2	Range	As per detail, 15 Thk.	SS304	1	
1	Heating Elements	1000 W/230V U shape Helprin	SS304	2	
	Std	Description	Size / Specification	MOC	Qty.

BILL OF MATERIAL

TELELEC HEATING EQUIPMENT PVT. LTD
 8/7/2 Akond Porwad, Indl. Area, New Fortkor Rd., N. Dohi - 5
 P.N.: +91-11-28762152, 65492217, 28761574. Fax: +91-11-28764378
 Email: info@telelec.com Web: www.telelec.com

Name	Date	Title
Drawn	Tag No.	A-0923 (Raditor)
Checked	Client	Neomatrix Engineering
Approved	Consultant	-
P.O. No.	Project	Raditor Test Facility
Date	Location	-
Projection	Scale	Dimensions
	NTS	mm
Revision	Drawn	1/1