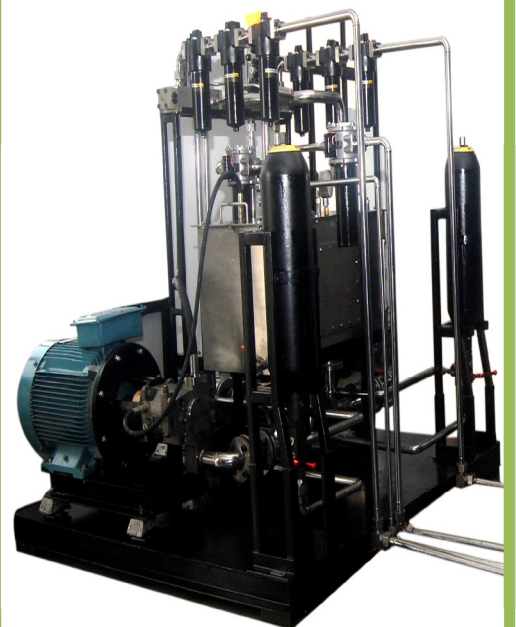
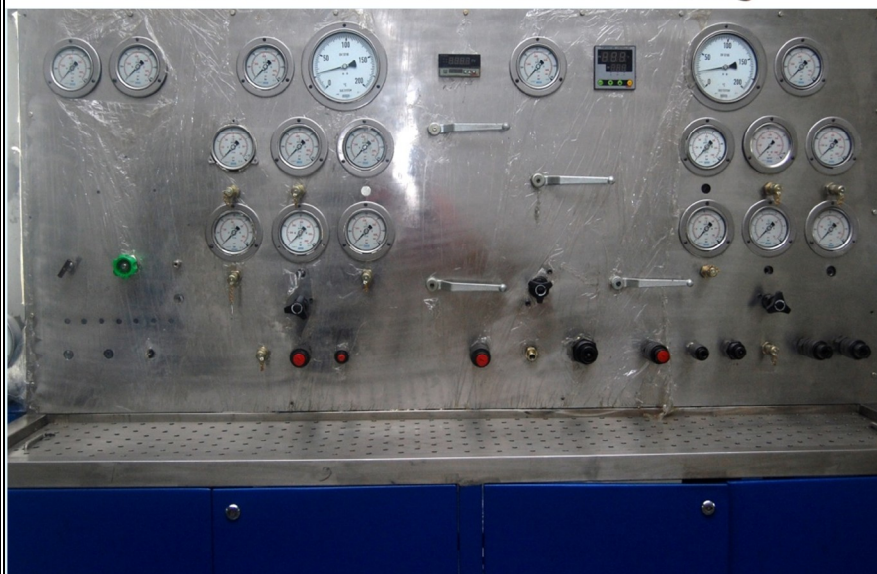


**NEOMETRIX**

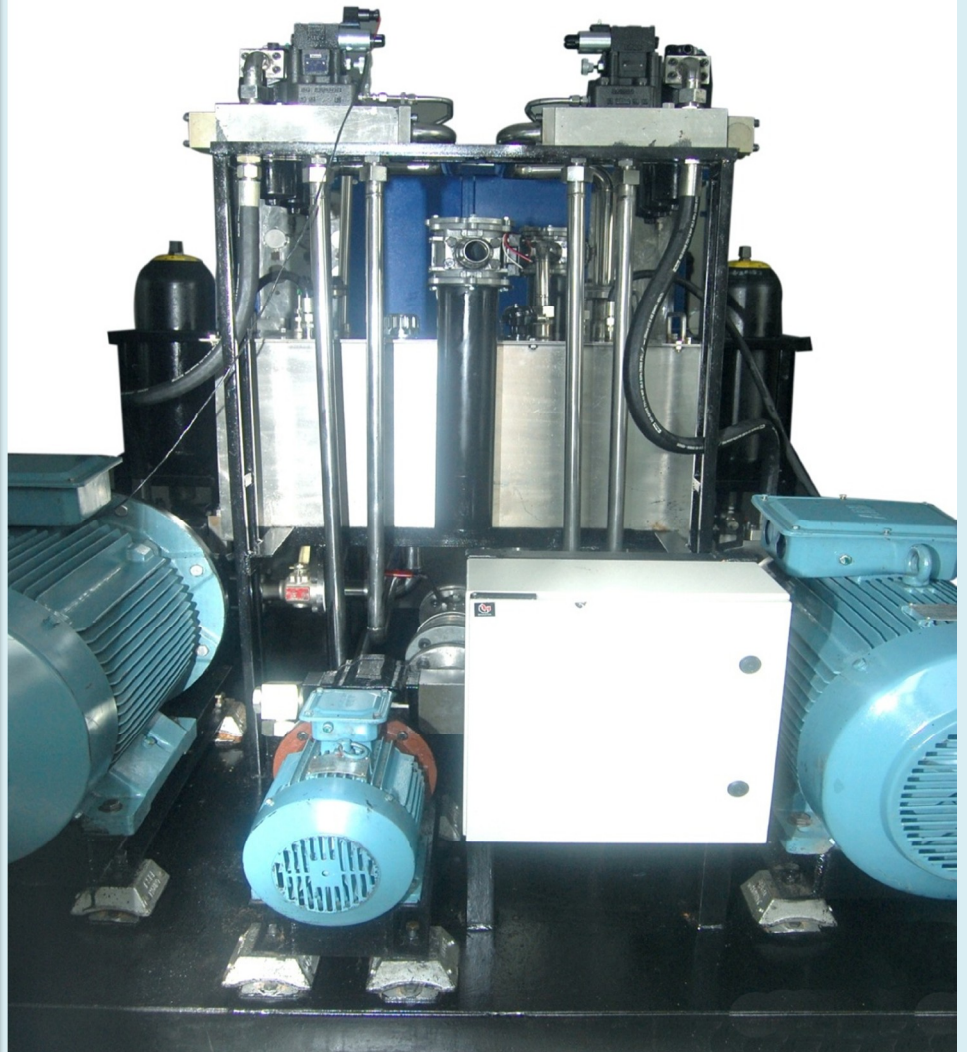
*The Complete Engineering Solutions Company*

PRODUCT  
CATALOG

# HYDRAULIC TEST RIG FOR AIRCRAFT



***The universal hydraulic test rig consists of a structure of fabricated frame of steel section members mounted on a steel base.***

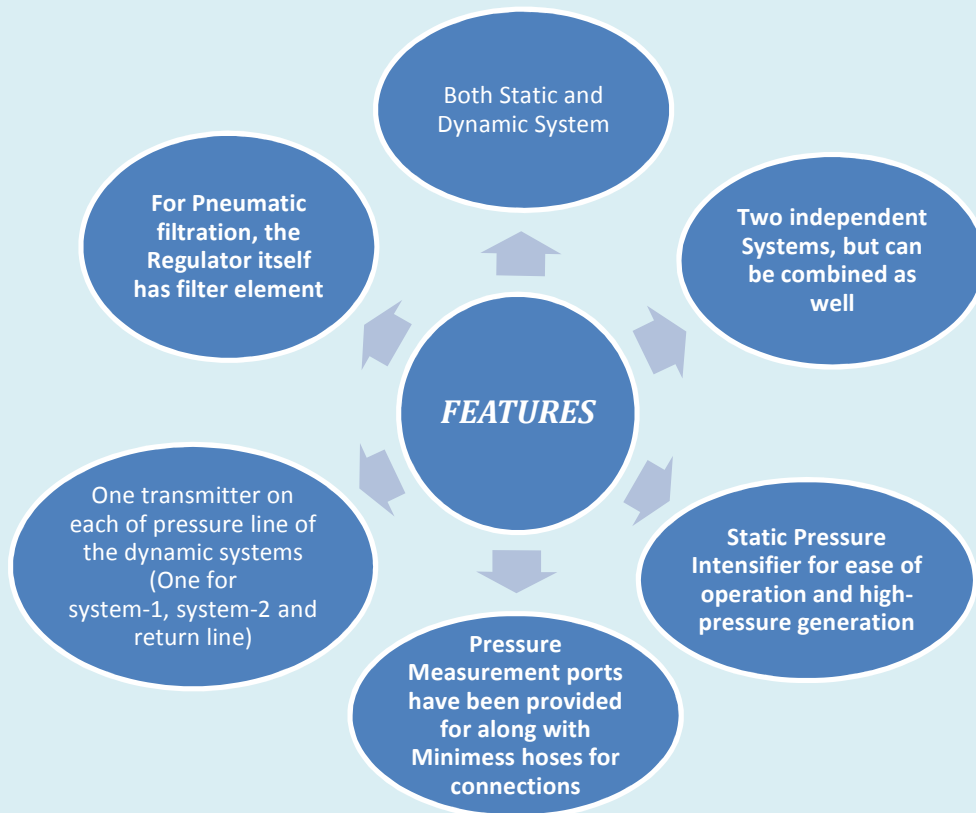


There are mainly 4 parts in the test rig:-

1. Hydraulic power pack system
  - a) Tank
  - b) Pump and motor
  - c) Bladder and accumulator
  - d) Fuel level indicator
  - e) Heat exchanger
2. Filtration system
  - a) Pressure indicator
  - b) Temperature indicator
  - c) DC valve
  - d) Needle valve
3. Measurement and control system
4. Interlocking & safety Devices



## Salient features of the Test Rig:



Static and Dynamic Pressure Test Rig - Execute Tests

Test Sheet Name: Test Unit Description: Operator Name:

Test Sheet | Hyd Circuit | Test Panel | Test Sheet | Refresh

Input Pr. System 1 Pressure & Flow Regulators

Temp System 1 0.0 Bar 0 C

DC Valve SYS I -A

DC Valve SYS I -B

DC Valve SYS 2 -C

DC Valve SYS 2 -D

Unit I Sol I (mA)

Unit I Sol 2 (mA)

Unit II Sol I (V)

Unit II Sol II (V)

Over Load Relay

Tank Level Low

Tank Level High

SYS 1 Man Valve

SYS 2 Man Valve

Filter SYS I 5 um

Filter SYS II 2 um

Filter SYS II 5 um

Filter Return Line 10um

Cycling on/off SYS 1

Cycling on/off SYS 2

Cycling on/off Unit I

Cycling on/off Unit 2

Flow Line 1(7.5-60 LPM)

Flow Line 2(7.5-120 LPM)

Pr-10 Bar

Pr-100 Bar

Pr-400 Bar(L)

Pr-400 Bar

Pr-1000 Bar

Solenoid Voltage (V)

Solenoid Current (mA)

Motor Start

Start Panel Emergency

Hyd Panel-Emergency

Bench Supply (220V)

Bench Emergency

Load Test Sheet [F1]

Save Report [F2]

Configure Cycling [F3]

Quit [Esc]

Configure Cycling Setup

System 1

T1 (sec) 0 T2 (sec) 0

Toff (sec) 0 No of Cycle 0

System 2

T1 (sec) 0 T2 (sec) 0

Toff (sec) 0 No of Cycle 0

Unit 1 (mA)

T1 (sec) 0 T2 (sec) 0

Toff (sec) 0 No of Cycle 0

Unit 2 (Voltage)

T1 (sec) 0 T2 (sec) 0

Toff (sec) 0 No of Cycle 0

Select

Save & Proceed [Enter]

Clear Data

Cancel [Esc]

Developed by Neometrix Technology (P) Limited, New Delhi

## **DESCRIPTION OF TEST RIG:**

The Test Rig is self-contained, General-Purpose Electro Hydraulic Test Rig. Safety & user Friendliness are the key features of the provided Test Rig. The Test Rig provided has been designed to address all the requirements of the Tender Document.

- With this Test rig, Two Operators can work independently.
- All the components as specified can be tested on this Test Rig.

The List of the Components to be tested on the Rig is as follows:

### **HS -748 A/C**

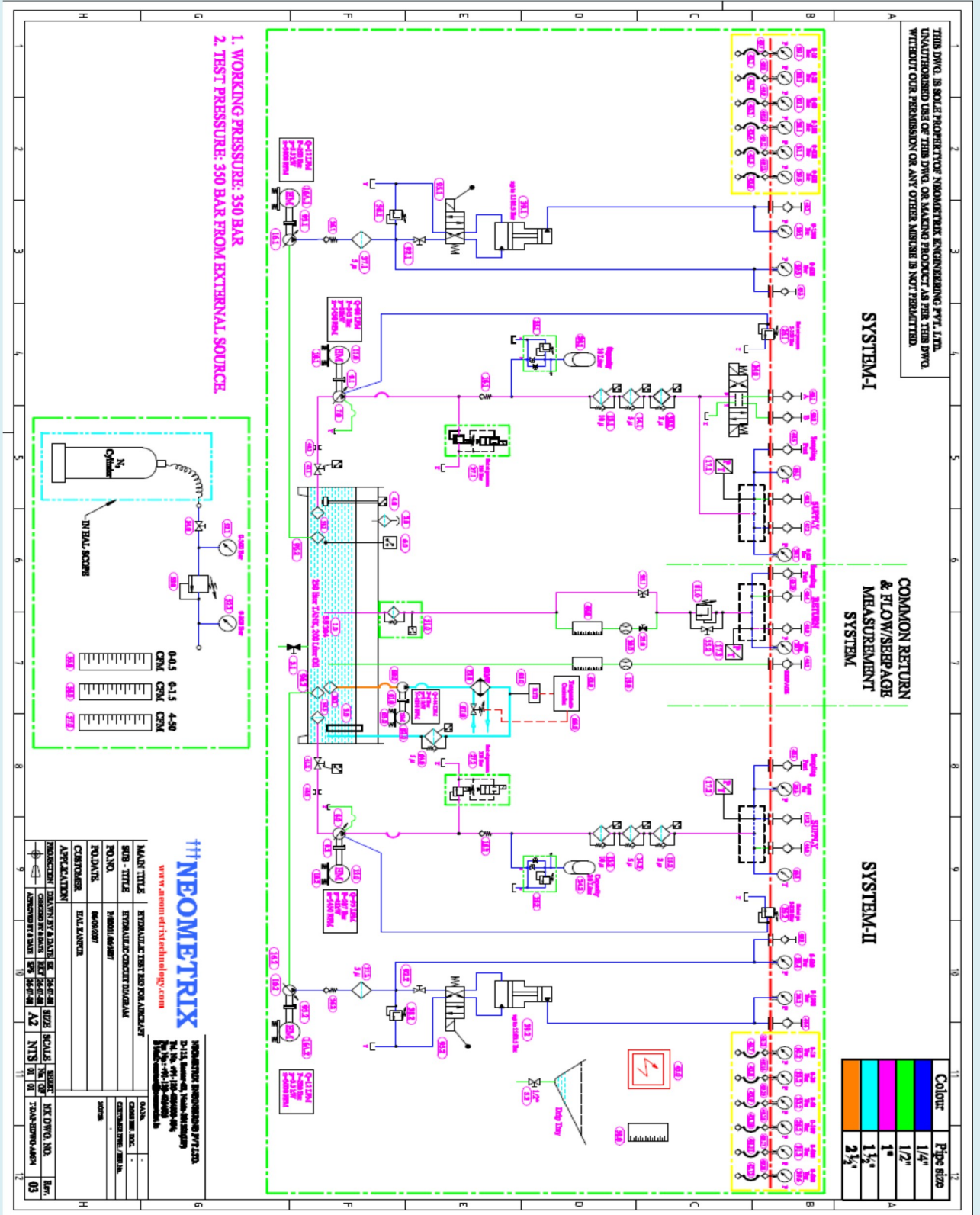
- Cut out Valve.**
- Pressure Relay (Req. static pressure of 5000 PSI)**
- Down Lock. & Unlock Assembly & Jack.**
- Main & Nose Jack.**
- Accumulators.**
- Relief valve**
- N.R.V. (Non Return valve)**
- Modulator**
- Flow indicator valve**
- Brake Assembly**
- Steering selector valve**

### **DO-228 A/C**

- Power Pack**
- Landing Gear Actuators**
- Accumulators**
- Brake control valve.**
- Brake Master cylinder.**

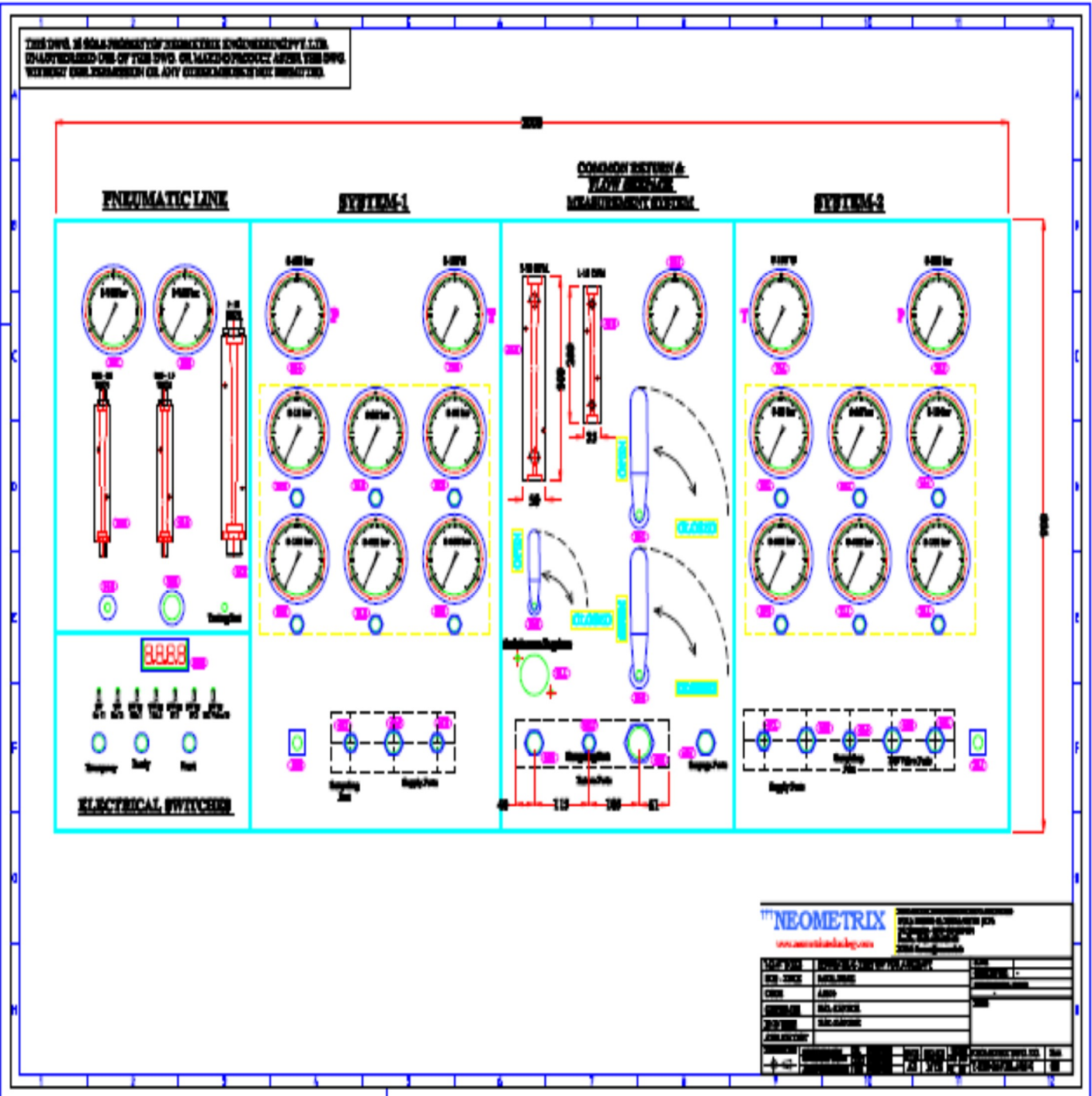


## HYDRAULIC CIRCUIT DIAGRAM FOR TEST RIG



## PANNEL DRAWING OF TEST RIG

THIS DRAWING IS THE PROPERTY OF NEOMETRIX ENGINEERING PVT. LTD. UNAUTHORIZED USE OF THIS DRAWING OR MAKE OR REPRODUCE ANY PART OF THIS DRAWING WITHOUT THE PERMISSION OR ANY OTHERS IS STRICTLY PROHIBITED.



**NEOMETRIX**  
www.neometrix.co.in

NEOMETRIX ENGINEERING PVT. LTD.  
PLOT NO. 10, INDUSTRIAL AREA, PHASE II  
CHENNAI, INDIA  
600 031

DATE	PROJECT	SCALE
DWG. NO.	REVISION	DESIGNER
CHECK	APPV.	DATE
PREPARED	SCALE	
DATE	SCALE	
APPROVED		



**††† NEOMETRIX**

*The Complete Engineering Solutions Company*

Contact Us:

Neometrix Engineering Pvt. Ltd

E-148, Sector – 63, Noida, Delhi, NCR, India – 201301

Ph: 0120-4500800, Fax: 0120-4500888

Email: [contact@neometrix.in](mailto:contact@neometrix.in)