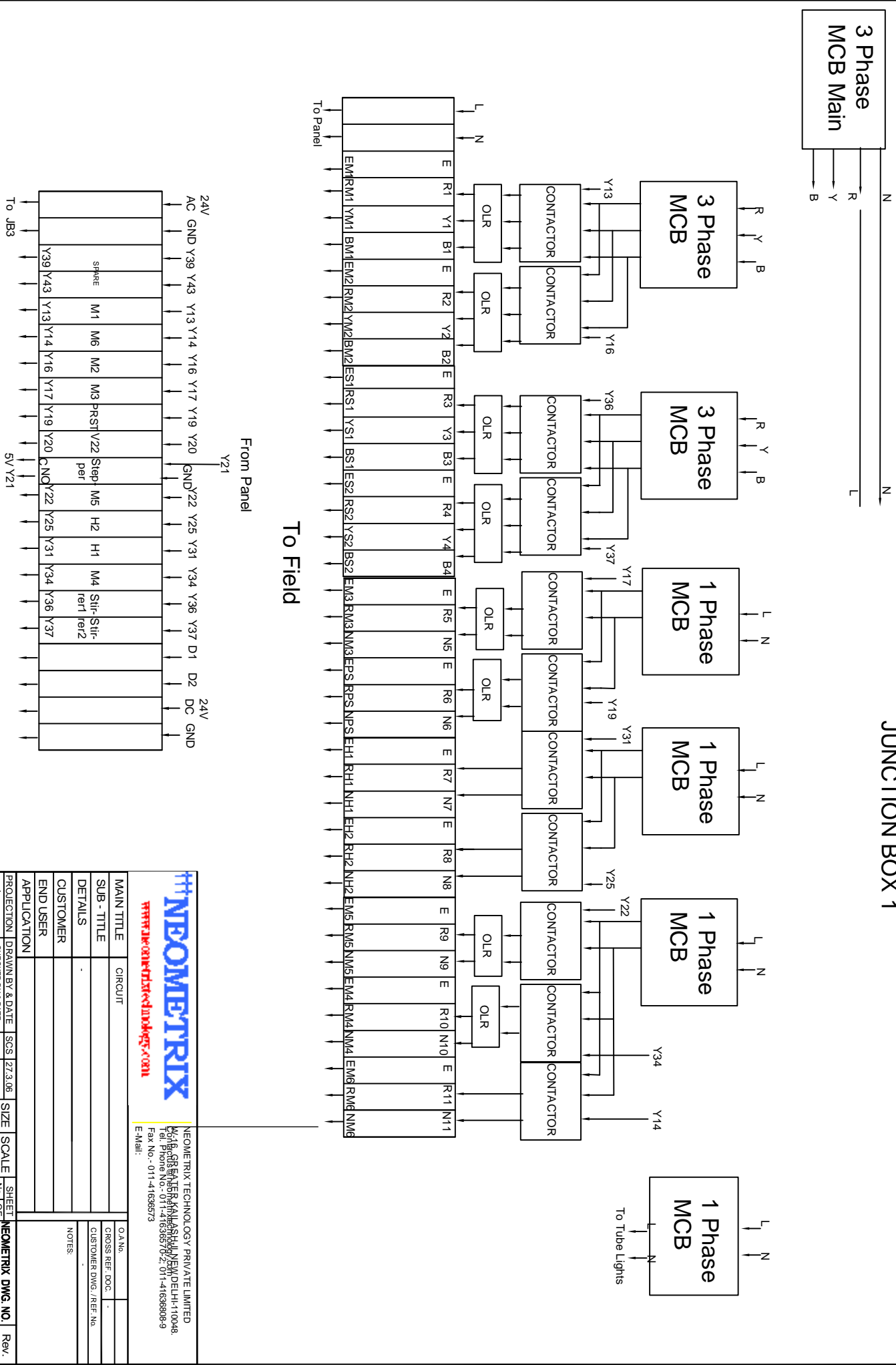


JUNCTION BOX 1



NEOMETRIX

NEOMETRIX TECHNOLOGY PRIVATE LIMITED
 14/18, GREATER BAKASHAH, NEW DELHI-110048.
 Tel: Phone No:- 011-41636902; 011-41636909
 Fax No:- 011-41636573
 E-Mail: info@neometrix.com

MAIN TITLE		CIRCUIT	
SUB - TITLE			
DETAILS			
CUSTOMER			
END USER			
APPLICATION			
PROJECTION	DRAWN BY & DATE	SCS	27.3.06
	CHECKED BY & DATE	NSHML	27.3.06
	APPROVED BY & DATE		
SIZE	SCALE	SHEET	NO. OF
A3	NTS	01	01
Rev.	NEOMETRIX DWG. NO.		
0			