

NEOMETRIX

Advance Valve Pressurepac-900 Bar

About

PressurePAC is a High Pressure system. Neometrix (Paskals) has developed PressurePAC for High Pressure Nitrogen Circuit Leak testing.

Whole system is divided into four parts:-

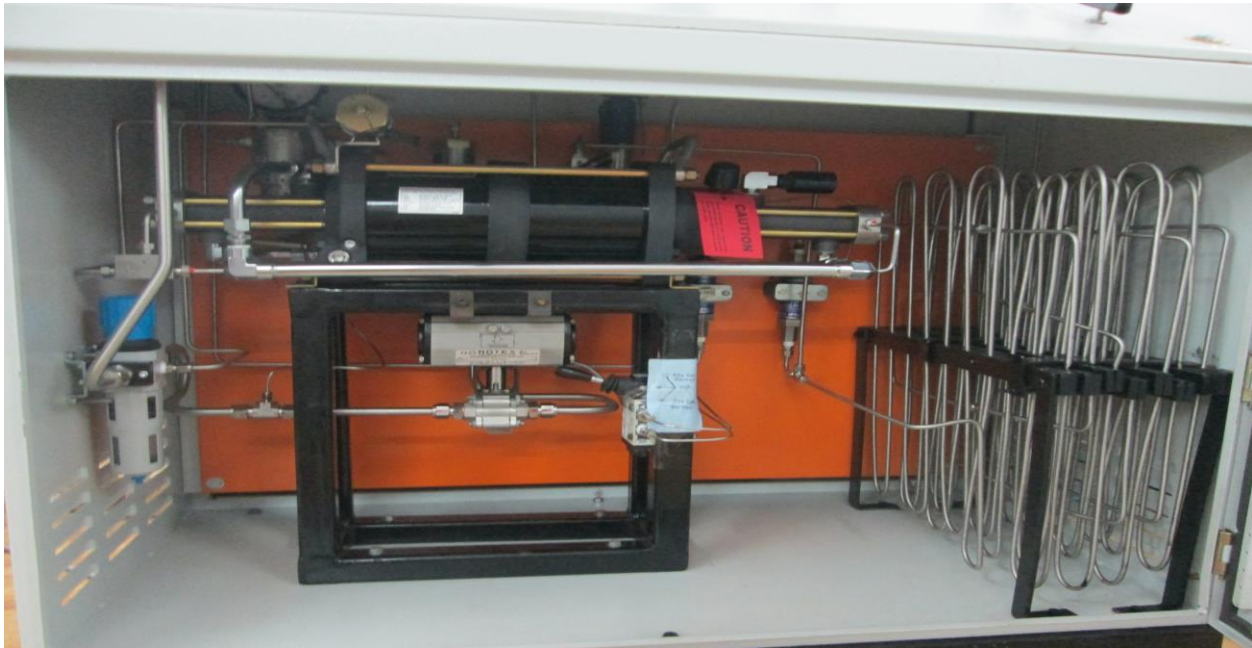
1. Air Drive Section:- Dry & Filter Air @ 4 bar is required for drive the PressurePAC-I.
2. Nitrogen inlet Section: - Nitrogen inlet section comprises of 0.1 micron High pressure filter& hose to insure the inlet Gas purity & connection of industrial Nitrogen to the PressurePAC Unit.
3. Nitrogen Boosting Section: This section comprises of Haskel Gas Booster & Haskel Gas Amplifier to Amplify & Boost the available Industrial Nitrogen Gas (3-150 bar) up to 300 bars.
4. Nitrogen Outlet Section: This section comprises of all the safety & controlling components of the PressurePAC along with measuring devices to measure performance parameters of the PressurePAC.
5. The Unit if remotely controlled via pneumatic Air and various safety interlocking are there for any probability of an accident.



NEOMETRIX

TECHNICAL DETAILS

S.no.	Name of Characteristic	Value of Characteristic
1	Drive Pressure (Air/Nitrogen)	4 bar Min.
2	Purity of Drive Air/Nitrogen	5 Micron
3	Drive Flow Required (Air/Nitrogen)	30-60 SCFM
4	DPT of Air required (Customer Scope)	-400C
5	Inlet Nitrogen Pressure	3-150 bar
6	Purity of Inlet Nitrogen	0.01 Micron
7	Output Pressure Range	Up to 300 bar
8	Automatic Start stop of Gas Booster	Gas Booster starts @ 180 bar & stop @ 300 bars uses of pilot switch interlocking at 180 & 300 bars
9	Step Pressurization	Pressurize unit in five stages (50 Bar, 150 Bar, 200 Bar, 250 Bar, 280 Bar) to minimize any accident
10	Manual Pressurization	Manual Pressure regulation up to 300 bars



NEOMETRIX

KEY FEATURES

- Air Drive Section:- Dry & Filter Air @ 4 bar is required for drive the PressurePAC-I.
- Nitrogen inlet Section: - Nitrogen inlet section comprises of 0.1 micron High pressure filter& hose to insure the inlet Gas purity & connection of industrial Nitrogen to the PressurePAC Unit.
- The Unit if remotely controlled via pneumatic Air and various safety interlocking are there for any probability of an accident.
- Nitrogen Boosting Section: This section comprises of Haskel Gas Booster & Haskel Gas Amplifier to Amplify & Boost the available Industrial Nitrogen Gas (3-150 bar) up to 300 bars.
- Nitrogen Outlet Section: This section comprises of all the safety & controlling components of the PressurePAC along with measuring devices to measure performance parameters of the PressurePAC.



NEOMETRIX

Application

- PressurePAC is a High Pressure system. It is used for Airforce, Nitrogen Leak testing System.

