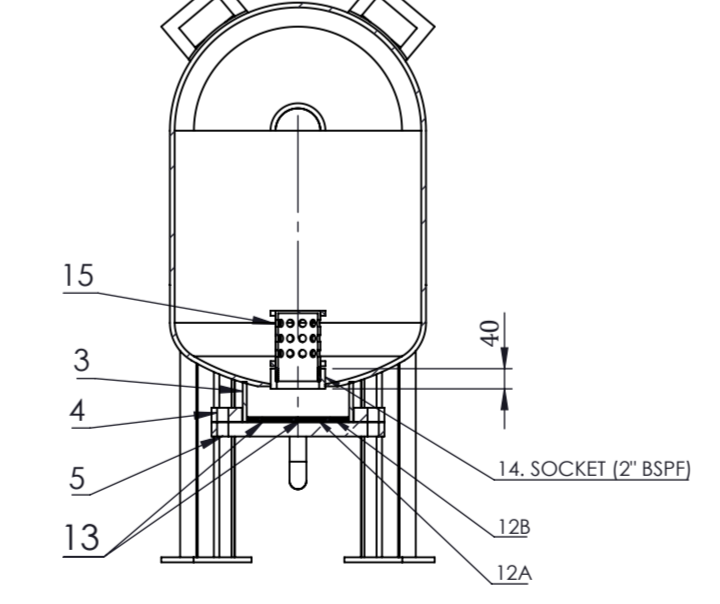
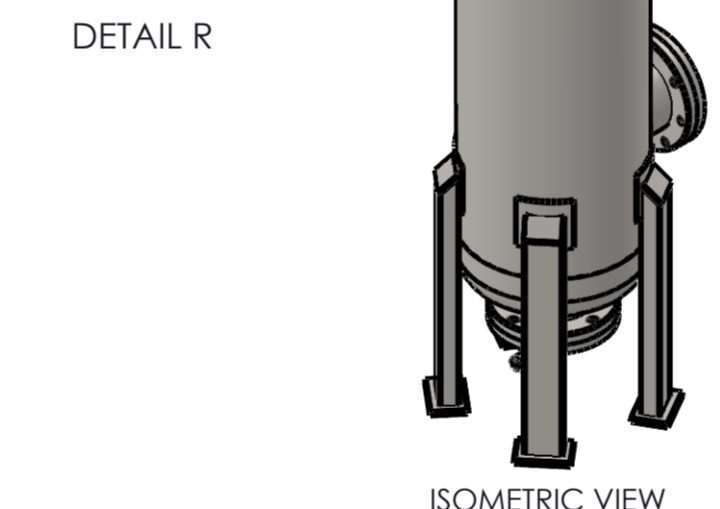
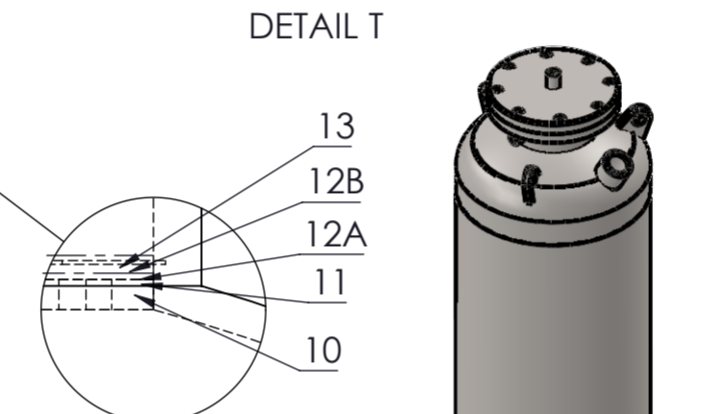
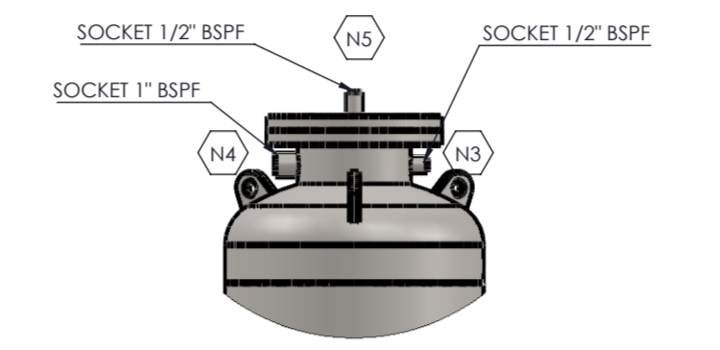
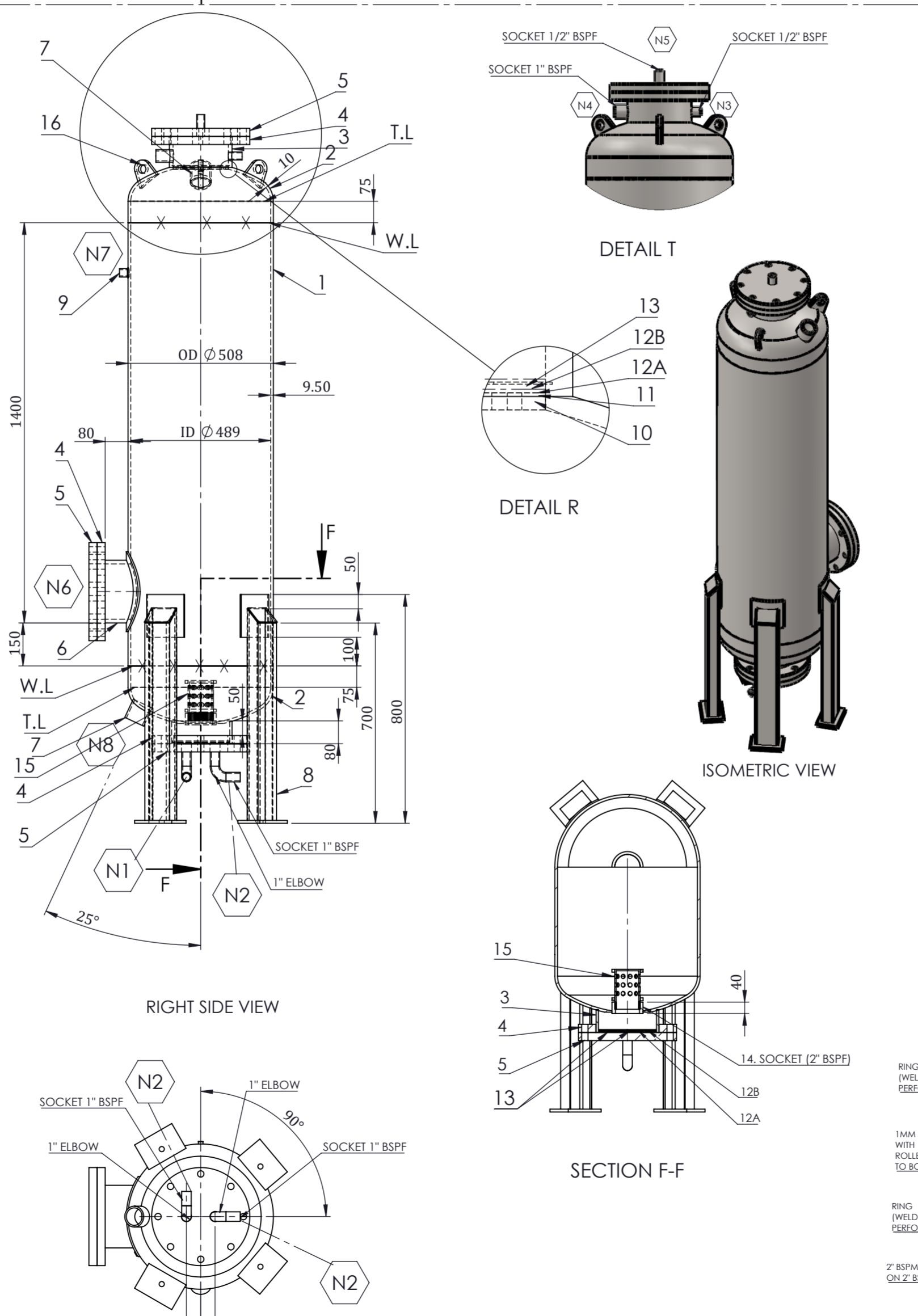
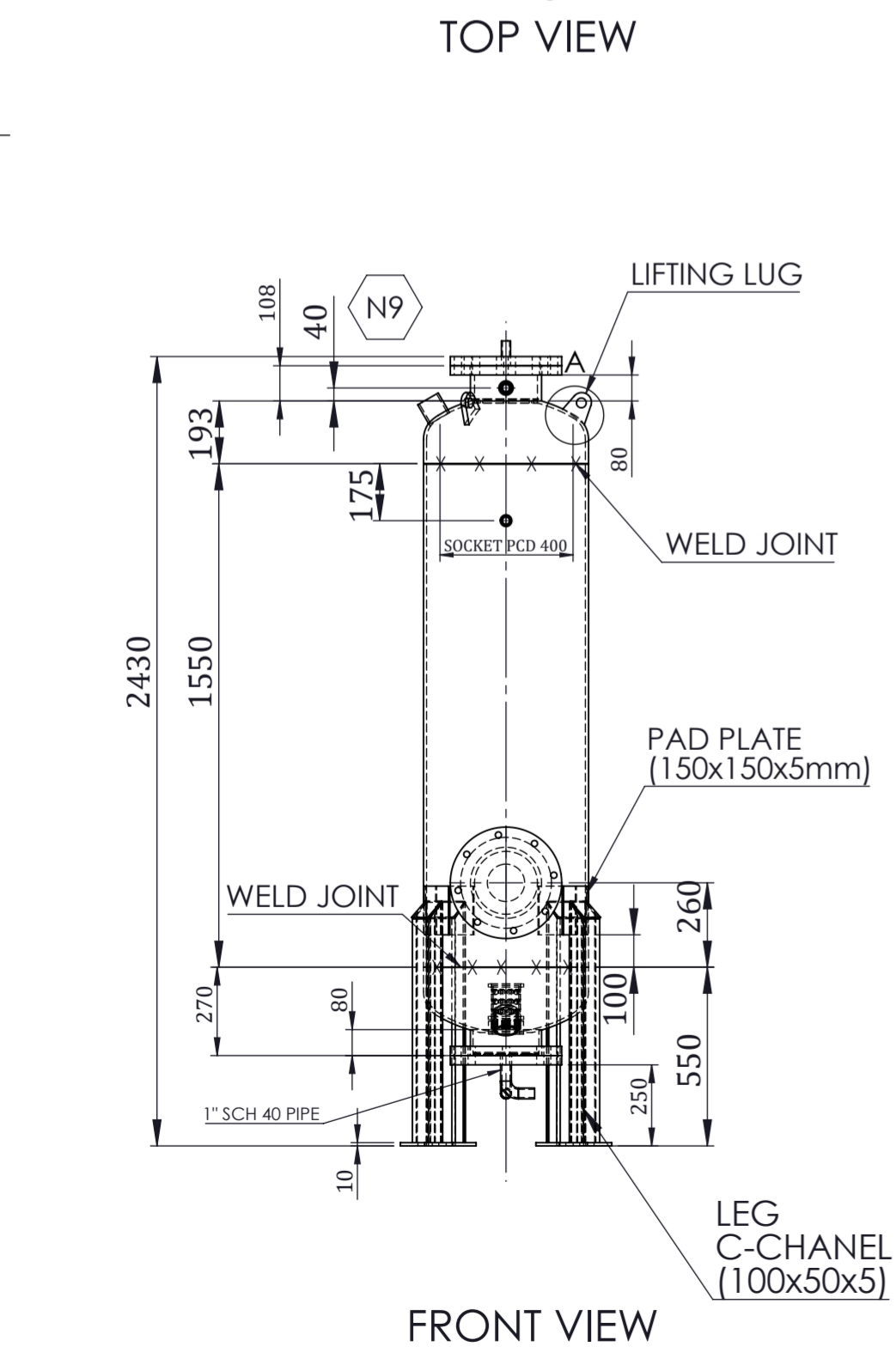
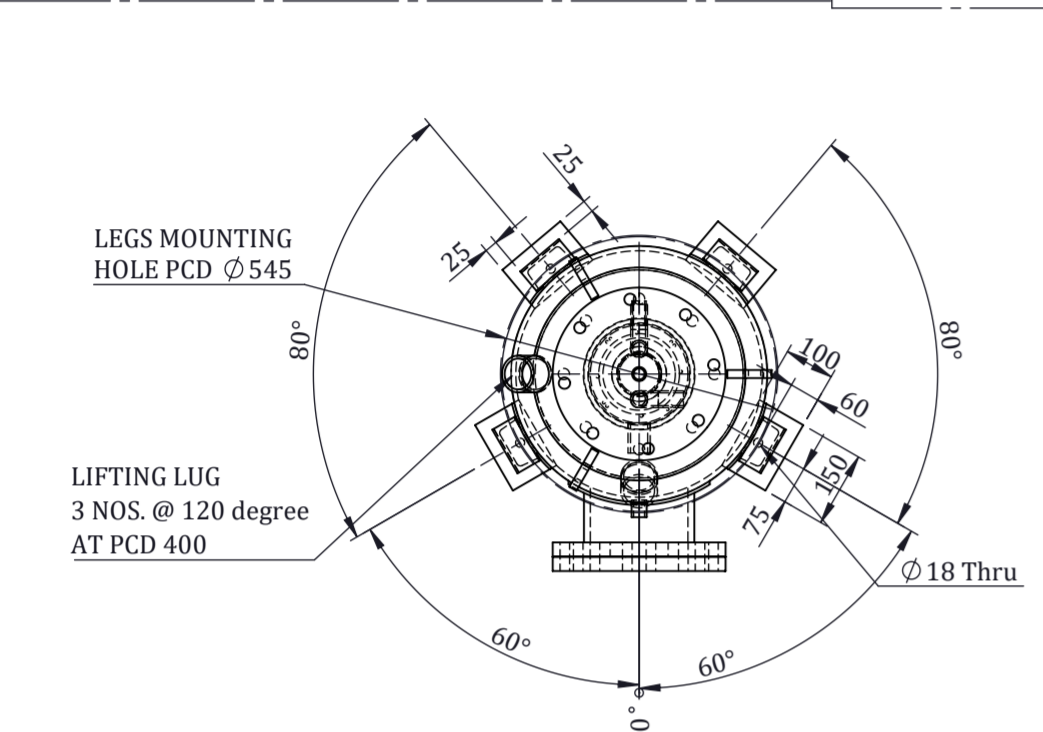
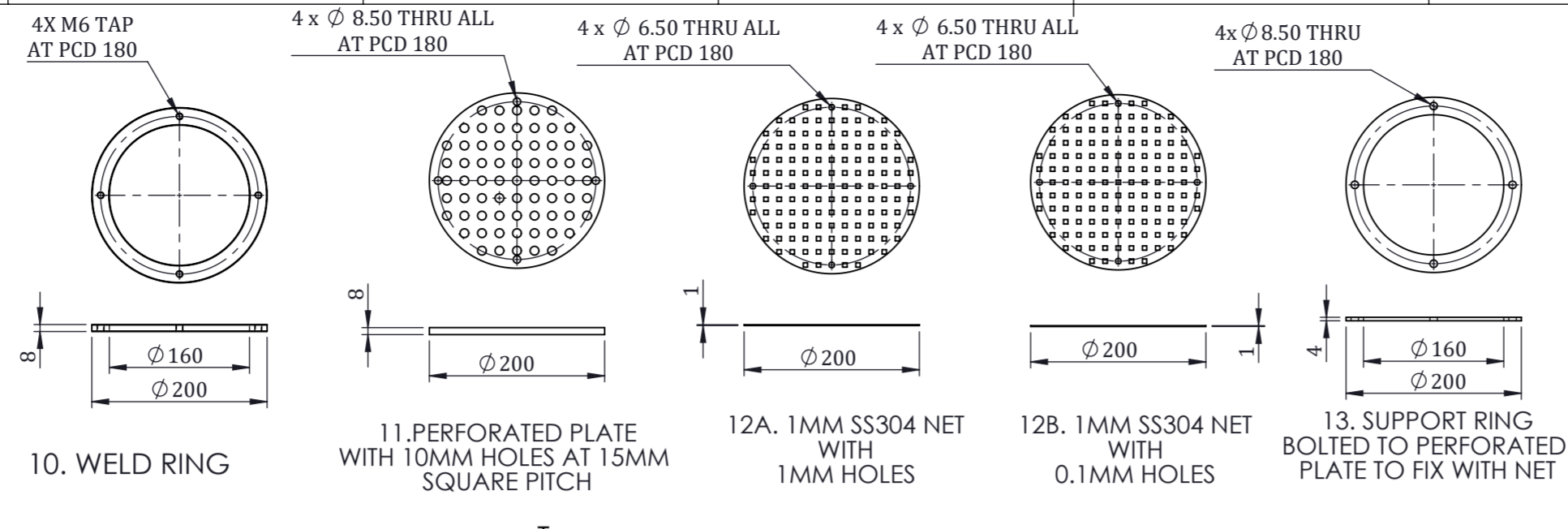
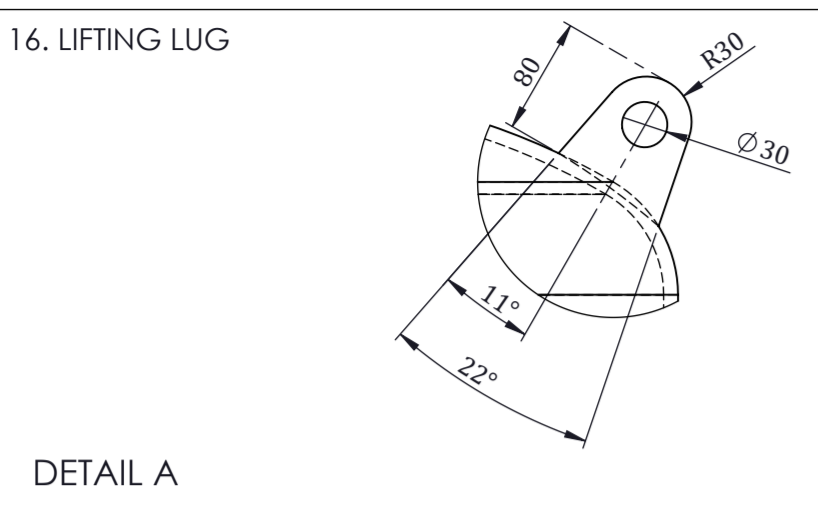


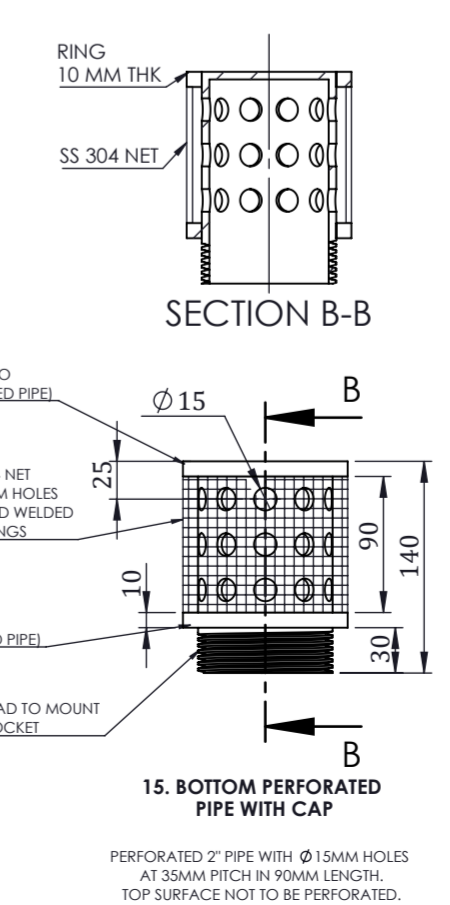
THIS DWG. IS SOLE PROPERTY OF NEOMETRIX ENGINEERING PVT. LTD. UNAUTHORISED USE OF THIS DWG. OR MAKING PRODUCT AS PER THIS DWG. WITHOUT OUR PERMISSION OR ANY OTHER MISUSE IS NOT PERMITTED.



S.NO.	ITEM	SPECIFICATION	MATERIAL	QTY.
1	SHELL	SEAMLESS PIPE OD 508 MM, 9.5MM THK.	IS 2062 GR.B	1
2	DISHED END	ELLIPSOIDAL 10MM THK	IS 2062 GR.B	2
3	NECK PIPE	8" SCH 40 SEAMLESS PIPE	IS 2062 GR. B	2
4	FLANGE	8" SORF ANSI CLASS 150#	IS 2062 GR. B	3
5	BLIND FLANGE	8" BLIND ANSI CLASS 150#	IS 2062 GR. B	3
6	HAND HOLE PIPE	8" SCH 40 SEAMLESS PIPE	IS 2062 GR. B	1
7	SOCKET	2" BSPF FLAT FACE CLASS 3000 WITH PLUG	IS 2062 GR. B	2
8	LEG WITH PAD PLATE	C CHANNEL (100x50x5)	IS 2062 GR. B	4
9	SOCKET	1/8" BSPTF SOCKET 3000 CLASS	IS 2062 GR. B	1
10	WELD RING	AS PER DWG.10	IS 2062 GR. B	1
11	PERFORATED PLATE	AS PER DWG. 11	IS 2062 GR. B	1
12A	WIRE NET (1MM HOLES)	AS PER DWG. 12 A	SS 304	2
12B	WIRE NET (0.1MM HOLES)	AS PER DWG. 12 B	SS 304	2
13	SUPPORT RING	AS PER DWG. 13	IS 2062 GR. B	1
14	PERFORATED SOCKET	2" BSPF FLAT FACE CLASS 3000	IS 2062 GR. B	1
15	BOTTOM PERFORATED PIPE	AS PER DWG. 15	IS 2062 GR. B	1
16	LIFTING LUG	AS PER DWG. 16	IS 2062 GR. B	3

No.	Item	Specification	Material	Qty.
1	N1	AIR INLET -1" BSPF	ANSI B 16.11	1
2	N2	AIR EQUILIZER-1" BSPF	ANSI B 16.11	1
3	N3	OXYGEN OUTLET-1/2" BSPF	ANSI B 16.11	1
4	N4	OXYGEN OUTLET-1" BSPF	ANSI B 16.11	1
5	N5	OXYGEN OUTLET- 1/2" BSPF	ANSI B 16.11	1
6	N6	HAND HOLE-8" ANSI CLASS 150#	ANSI B 16.11	1
7	N7	GAUGE PORT-1/8" BSPTF	ANSI B 16.11	1
8	N8	DRAIN PORT-2" BSPF	ANSI B 16.11	1
9	N9	FILLING PORT-2" BSPF	ANSI B 16.11	1

MODEL	NAMO 200
DESIGN CODE	ASME SEC-VIII DIV-I
WORKING PRESSURE	8.5 Kg/cm2
DESIGN PRESSURE	9.3 Kg/cm2
HYD. TEST PRESSURE	14.5 Kg/cm2
DESIGN TEMP.	50 degree celcius
CORROSION ALLOWANCE	1.6MM
SHELL THICKNESS	9.5 MM
DISHEND THICKNESS	10 MM



NOTE:-
 1. ALL DIMENSIONS ARE IN MM.
 2. SURFACE FINISH: SHOT BLASTING ON INTERNAL & EXTERNAL SURFACE.
 3. PAINTING: POWDER COATING ON EXTERNAL SURFACE- SIEMENS GREY-RAL 7035
 4. HYDRO TESTING & HOT AIR FLUSHING FOR MOISTURE REMOVAL WITH CERTIFICATION.
 5. MOUNTING PROVISION FOR OTHER ITEMS WILL BE REQUIRED ON PSA TOWER SHELLS. THIS WILL BE CONVEYED DURING ASSEMBLY AFTER MANUFACTURING AT SUPPLIER FACTORY.
 6. ALL NUT & BOLTS TO BE SS-304 WHICH WILL BE USED INSIDE.

NEOMETRIX ENGINEERING PVT LTD
 E-148, SECTOR 63, NOIDA, UP-201301
 Tel No.: 0120 4500800
 Fax No.: 0120 4500888
 E-mail: contact@neometrixgroup.com
 Design Dept.: design@neometrixgroup.com

TITLE	PSA NITROGEN GENERATION PLANT		
SUB-TITLE	MOX-PSA TOWER-200 LPM		
SRS CODE	A2768		
CUSTOMER	Logo		
END USER	Logo		
TD/PO. No.	--		
PROJECTION	DRWN	M.F	24-09-2021
	CHK.	R.K	24-09-2021
	APPR.	S.P.S	24-09-2021